

Energizer[®]

**SMART WIFI
INDOOR P/T CAMERA**



QUICK START GUIDE

EIP1-1004

v1.1

GETTING STARTED

Thank you for choosing the **Energizer®** Smart Camera. This quick start guide will help you with setup and installation.

Package Includes:

ESTIMATED SETUP



- Smart Indoor Camera
- Quick Start Guide
- USB Power Adapter
- Camera Base
- 6ft Micro USB Power Cable
- Mounting Equipment
- Reset Tool
- Adhesive Non-Slip Disk

What You Need:



App



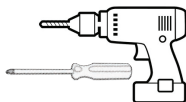
2.4GHz



5GHz



2.4GHz WiFi



**Screwdriver
and Drill**
(Optional)



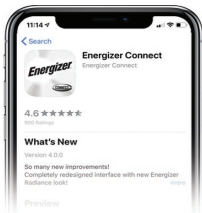
Before setup, make sure your phone is connected to the 2.4GHz WiFi network that your device will be placed on. You may also need to turn on location and Bluetooth to find nearby networks.



CONNECT THE DEVICE

STEP 1

Download the free **Energizer**® Connect app from the App Store (for iPhones) or Google Play Store (for Android phones).



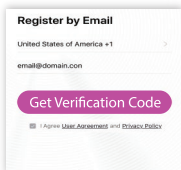
STEP 2

Make sure your mobile device is connected to your **2.4GHz WiFi** network.

Open the app and **click** “Create Account” by following the on-screen instructions.



After your initial sign in, your app will remember your password and log you in automatically. You can also choose to manually log out under Settings in the Main menu.



You may need to check your Spam folder for the verification code

STEP 3

Plug the camera into a wall outlet using the provided 6 foot cable and USB power adapter.

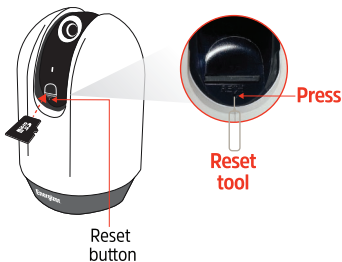


The indicator light on the camera should start blinking **RED** for pairing mode.

The camera will also make a chime sound, letting you know it has started up.

LED Behavior		Device Status
Red	Blinking	Pairing Mode
	Solid	Starting Up
Blue	Blinking	Attempting to Pair
	Solid	Connected

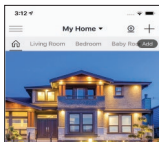
If the LED is not blinking, then you are not in pairing mode. Reset the camera using the included **reset tool** to **press** the reset button for 5 seconds until you hear the camera make a chime sound.



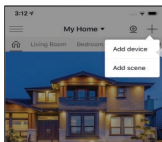
Tip: If you would like to install a micro SD card, insert it as shown with the gold pins facing down.
(micro SD card not included)

STEP 4

After logging in, **click** "+" on the top right of the screen and **select** "Add device".



Click



Select



STEP 5

Select the Camera category and **confirm** the indicator light is still blinking red.

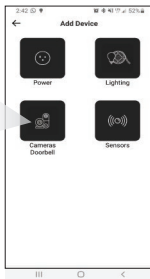
Click "Next Step".

Help: Switch between pairing modes. See troubleshooting page 16.

Select



Cameras/



Confirm

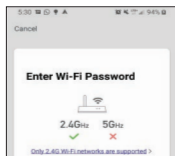


Click

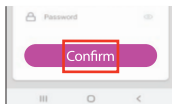
STEP 6

Confirm that the displayed **WiFi** network is your **2.4GHz WiFi** network, **enter** your WiFi password and **click** “Confirm”.

Confirm WiFi



Enter and Click



Help: If you need information about **2.4GHz WiFi** networks, click the link to go to our Connect FAQs on our website.

STEP 7

On the next screen, a QR Code will appear. Position your camera to scan this QR code on your phone.

Click “Continue” when you are ready.

Touch the lens of the camera directly against the QR code on your phone and slowly move the camera away.



Click



Click


Once you hear an audible prompt from the camera, **click** the “I Heard a Prompt” button.



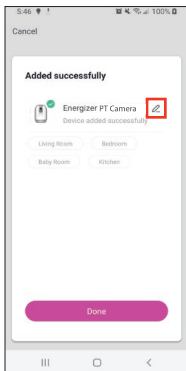
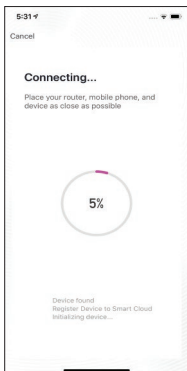
Tip: If you don't hear the prompt, try pairing using EZ mode. Take a look at troubleshooting on page 16.

STEP 8

Your Smart Camera will now be connected to the network. Confirm the settings for your device and then **Click** “Done”.

TIP: You can put your camera directly in a room by selecting one of the available rooms. **Click** the  button to change the name of the product.

PROCESSING TIME



Click

Your **Energizer**® Smart Camera is now ready to use. You can now view the camera remotely and receive mobile alerts. We hope you enjoy using your **Energizer**® Smart Camera. For frequently asked questions and instruction videos, please visit our website at www.energizerconnect.com.

INSTALLATION

Your Smart Camera can be positioned on any flat surface (table top), or can be mounted on a wall.

OPTION 1: Table Top

STEP 1

Rotate the camera's base counter-clockwise and remove it from the camera.



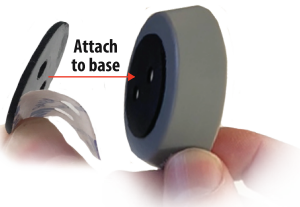
STEP 2

Connect the USB Power Cable connector to the camera's micro USB port.



STEP 3

Peel off the backing from the non-slip disk and attach it to the underside of the camera's base.



STEP 4

Feed the cable through the slot in the camera's base, align the locking tabs in the base with their matching slots on the underside of the camera; press firmly and rotate the camera in the clockwise direction to reattach the camera to the base.



STEP 5

Position the camera at your desired location.

OPTION 2: Wall Mount

STEP 1

Rotate the camera's base counter-clockwise and remove it from the camera.

STEP 2

Connect the USB Power Cable connector to the camera's micro USB port.



STEP 3

Position the camera's base at your desired location on the wall, and mark the screw hole positions on the wall through the mounting holes in the camera's base.



NOTE: When positioning the base, take note of where you will connect the USB power cable to the power supply, and make sure that the cable slot in the base is facing your desired direction (up, down, or to one side).

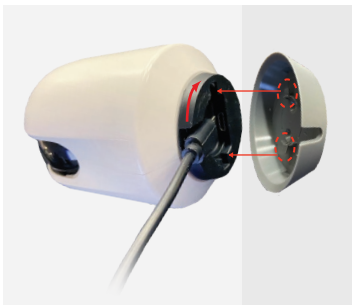
STEP 4

Depending on your wall, use a screwdriver and drill (optional) to attach the camera's base securely to the wall with the provided screws and anchors (optional).



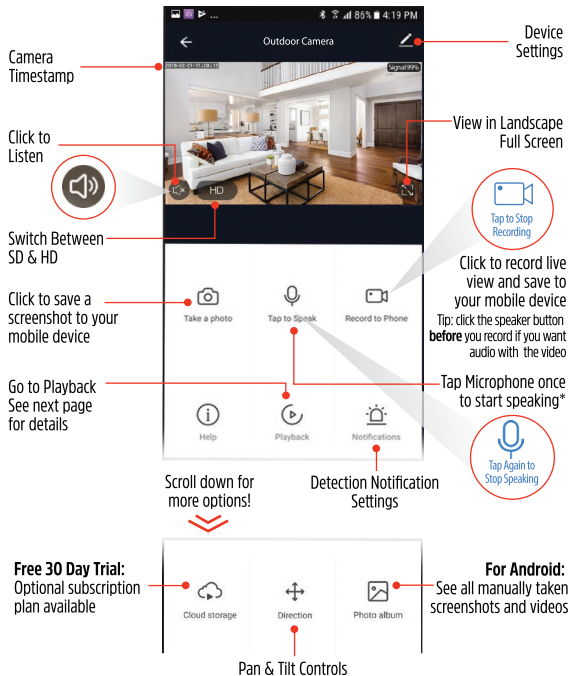
STEP 5

Feed the cable through the slot in the camera's base, align the locking tabs in the base with their matching slots on the underside of the camera; press firmly and rotate the camera in the clockwise direction to reattach the camera to the base.



Tip: Test out moving the camera in the app to make sure it is securely mounted.

LIVE VIEW CONTROLS



*By default, when you click to turn off your microphone, the speaker will automatically turn on. This way once you are done speaking, you can immediately hear a response!

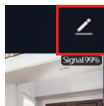
You won't be able to turn the microphone and speaker on at one time. See Troubleshooting on page 16 for more details.

RECORDING CONTROLS

How to turn on Event (Motion) Triggered Recordings that save to the microSD card in the camera.

STEP 1

Click the icon in top right of the live view screen to enter Device Settings.



STEP 2

Scroll down and **click** "Storage Settings".



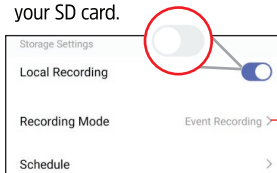
Click



If you don't see the Storage Settings, take out the micro SD card (not included) from the camera and make sure it is inserted properly.

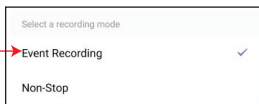
STEP 3

Switch on the local recording switch to enable recording to your SD card.



STEP 4

Select "Event Recording" to enable recording to your SD card when motion is detected.



Tip: You can also set schedules for when you want recordings to be enabled.

Enabling Event Recording will allow you to select individual recordings triggered by motion in the Playback Controls.

PLAYBACK CONTROLS

The screenshot shows a video player interface. At the top, there's a status bar with a back arrow, a date '2018-01-09', and a settings icon. Below this is a video frame showing a living room. A 'Camera Timestamp' label points to the top left of the video frame. A 'Click to Listen' label points to a speaker icon in the bottom left of the video frame. A 'Device Settings' label points to the settings icon in the top right. A 'View in Landscape Full Screen' label points to a full-screen icon in the bottom right. A 'Scroll along the timeline and pinch zoom to locate your recording' label points to the video frame. Below the video frame is a timeline with a play/pause button and a progress bar. A 'Click to view individual recordings' label points to a calendar icon on the left. Below the timeline is a list of recordings for '2020-08-20'. Each entry shows a time (e.g., '07:59:31'), 'Event Recording', and 'Duration: 00:01:42'. A 'Click to screenshot the current playback' label points to a camera icon labeled 'Take a photo'. A 'Tap to Stop Recording' label points to a video camera icon labeled 'Record to Phone'. A 'Pinch' and 'Zoom' gesture icon is shown. A calendar for '2020-08' is shown with the 20th highlighted. A 'Select days that have recordings to view' label points to the calendar. A 'Click to start recording the current playback to your mobile device' label points to the 'Record to Phone' button.

Camera Timestamp

Click to Listen

Device Settings

View in Landscape Full Screen

Scroll along the timeline and pinch zoom to locate your recording

Click to view individual recordings

Click to screenshot the current playback

Pinch

Zoom

2020-08

2020-08-20

07:59:31
Event Recording
Duration: 00:01:42

09:59:31
Event Recording
Duration: 00:00:59


Take a photo

Record to Phone

Tap to Stop Recording

Select days that have recordings to view

Click to start recording the current playback to your mobile device



Tip: Click the speaker button **before** you record if you want audio with the video.

VOICE ACTIVATION

To enable voice access for your Smart Camera, you will need to link the **Energizer®** Connect skill with your choice of voice assistant.

Voice Activation for Alexa

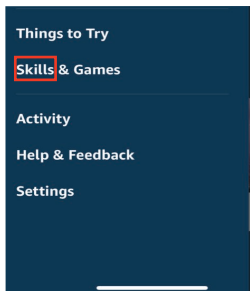
Make sure your Alexa device is installed and set up first.

STEP 1

Open your Alexa app.

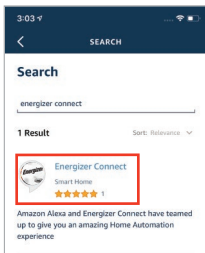
STEP 2

Open the menu to search for "Skills".



STEP 3

Search for & **choose** **Energizer®** Connect.



Choose

STEP 4

Authorize your account with the Alexa skill using the username and password from your **Energizer®** Connect app.

STEP 5

Using the name you assigned your camera, you can ask Alexa to turn on/off your camera.

Ex: "Alexa, show me the *kitchen* camera".

Voice Activation for the Google Assistant

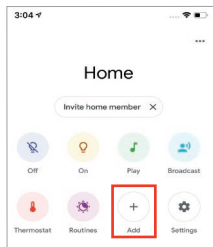
Make sure your Google Assistant device is installed and set up first.

STEP 1

Open your Google Home app.

STEP 2

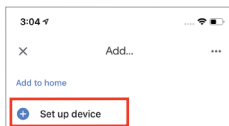
Click the “+” to add a new device.



Click

STEP 3

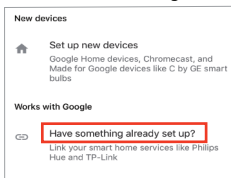
Click “Set up device”.



Click

STEP 4

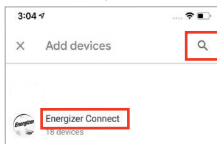
Click “Have something already set up?”



Click

STEP 5

Search for & **choose** **Energizer® Connect**.



Choose

STEP 6

Authorize your account with the Google Assistant skill using the username and password from your **Energizer® Connect** app.

STEP 7

Using the name you assigned your camera, you can ask the Google Assistant to turn on/off your camera.

Ex: “Ok Google, show me the *kitchen* camera”.

LEGAL & WARRANTY

To see Warranty information and Certification Legal warnings, please see our website.

www.energizerconnect.com

©2021 Energizer. Energizer, Energizer Bunny design and certain graphic designs are trademarks of Energizer Brands, LLC and related subsidiaries and are used under license by Jem Connected IOT, Inc. All other brand names are trademarks of their respective owners. Neither Jem Connected IOT, Inc. nor Energizer Brands, LLC is affiliated with the respective owners of their trademarks.

Apple and the Apple logo are trademarks of Apple Inc., registered in the U.S. and other countries.

App store is a service mark of Apple Inc.

Google, Android and Google Play are trademarks of Google LLC.

Amazon, Alexa and all related logos are trademarks of Amazon.com, Inc. or its affiliates.

FCC Compliance

This device complies with Part 15 of the FCC. Operation is subject to the following two conditions: (1) this device may not cause harmful interference, and (2) this device must accept any interference received, including interference that may cause undesired operation. Changes or modifications not expressly approved by the party responsible for compliance could void the user's authority to operate the equipment.

HAVING TROUBLE WITH SETUP?

Don't return this product to the retailer, we're here to help.

Please call us at 888-693-4189 or visit www.energizerconnect.com for video tutorials, updated manuals and more FAQs for your device.

My device won't connect to my network!

- 1.** Make sure you are connected to your **2.4 GHz network** and your device is blinking red before you start trying to connect your device.
- 2.** You may need to reset your device if you are having trouble. Check out page 2 for the location of your device's reset button.
- 3.** To allow the app to locate the network, you may need to allow permissions for location and turn on your Bluetooth.
- 4.** If you are not certain what type of network you have, contact your Internet Service Provider and ask them to create a separate, dedicated **2.4GHz network**. You can also do this manually in your router's settings.
- 5.** Try moving to a spot closer to your router for connecting.
- 6.** You can also purchase a WiFi extender to increase your WiFi range and strength.
- 7.** In some cases, you can try using the secondary pairing mode by clicking "Net Pairing Mode" on the Add Device screen (see bottom of page 3). Follow the on-screen instructions.

My device says it's already bound when I try to connect it!

1. When you get the ALREADY BOUND screen, click the blue link to send us an Unbind Request. We can assist you further from the in-app Help Center.

When my camera is pointed at a window at night, I can't see through the glare!

1. At night, the camera's IR LEDs will turn on automatically to provide night vision when it gets dark. IR light reflects off of glass. So if you are trying to use your Indoor Camera through a window at night, go into the Device Settings->IR Night Vision and set it to OFF.

When I try to view live view, it says "Offline" or "Cannot establish encryption channel"

1. Unplug your camera from power and plug it back in.
2. Check to make sure you have the newest firmware for your camera. Go to the device settings and scroll down to Firmware Information.
3. Contact us so we can assist you.

Setting up Motion Detection and Recording

1. From the live view of the camera, click Notifications, or from the device settings click Detection Settings.
---You can schedule when you want to receive notification of motion.
2. To save recordings, you can purchase Cloud Recording or install a microSD card (max 128GB, not included) into the camera for LOCAL recordings.
---Recordings can be based of motion or can be All Day.
---Please note: All Day recording will fill up a microSD card much quicker.
3. Every time a motion is detected, a screenshot is saved for your review. They can be found in the Notification Center. From the Home page, click the **three lines** in the top left, and then click Notifications.



- 4.** If you are using a microSD card, it will continue to record until the the microSD card fills up.
- If you are using Motion based recording: Separate files are recorded for each detection, so when the memory fills up, it will begin to record over the oldest detections, one at a time.
- If you are using All Day recording: One files is saved as the video is continuously recording. When the memory fills up, it will clear the entire recording and start fresh.

Two Way Audio

- 1.** By default, the camera will only use the microphone OR the speaker. When you click the microphone on the live view, you will be able to speak through the camera, and when you click the microphone again to turn it off, the speaker will automatically turn on so you can hear whats being said at the camera.
- 2.** For some cameras, you can turn on Full Two Way Audio by going to the Device Settings -> Basic Function Settings -> Talk Mode and click on Two-Way Talk.